

# Old timbers in the Wye – the Roman Crossing?

Roman Crossing Day School 19<sup>th</sup> October 2024

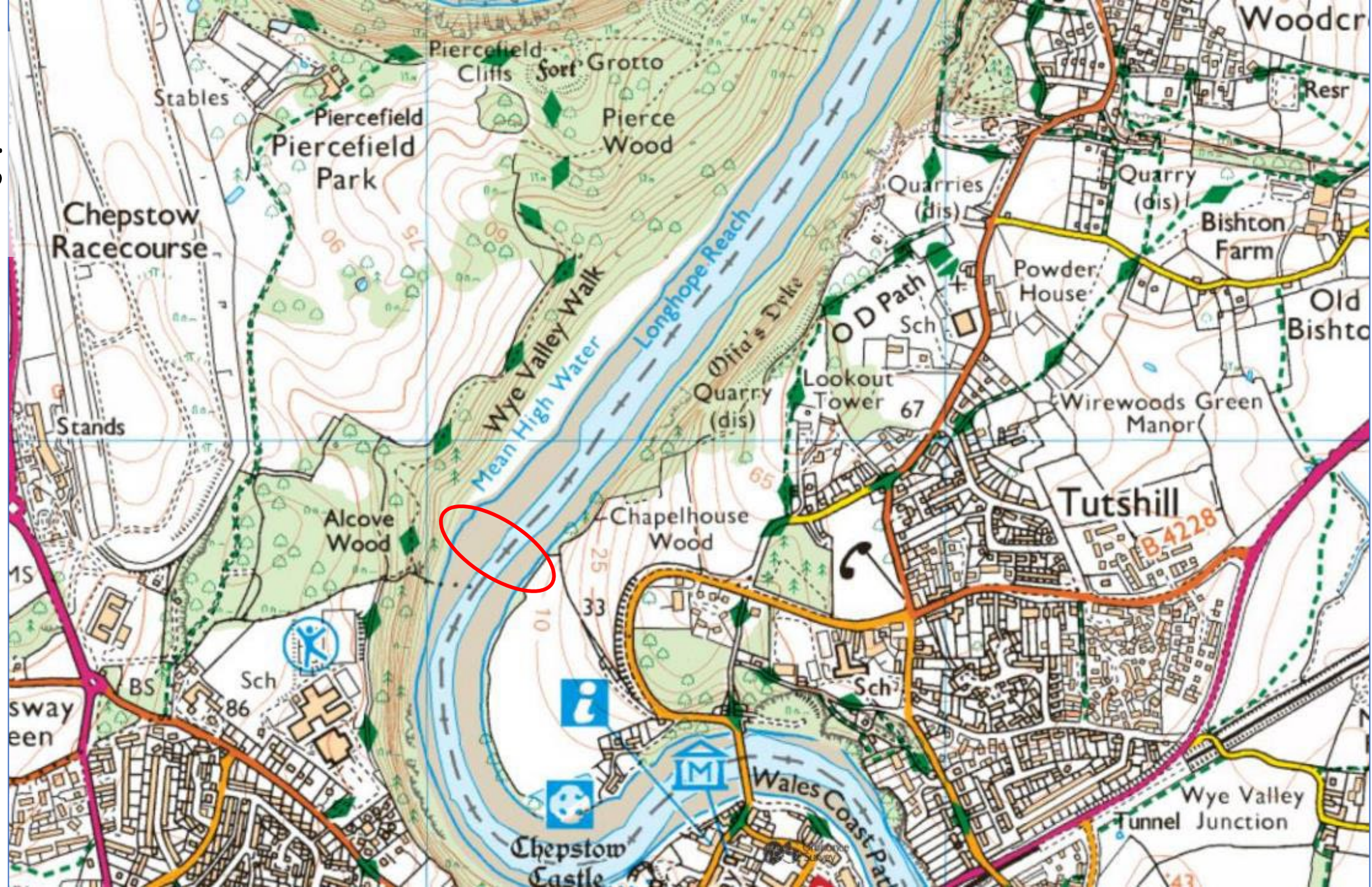
Simon Maddison, UCL & Chepstow Archaeological Society



*Chepstow Archaeological Society*

# Roman Crossing

OS maps



# Roman Crossing

Google Earth

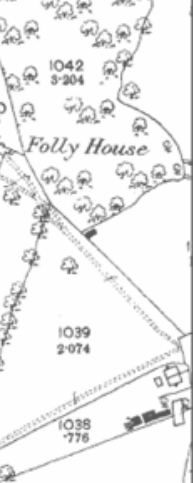


# Investigation history

- 19<sup>th</sup> C: Antiquarian reports, first OS maps
- 1911: Excavated
- 1962: Field visit
- 2003: 'Extreme Archaeology'
- 2023/24: Chepstow Arch. Soc. & SARA



1911



1962

Capt. William Groves on site of ROMAN BRIDGE, 1962



2003

1911

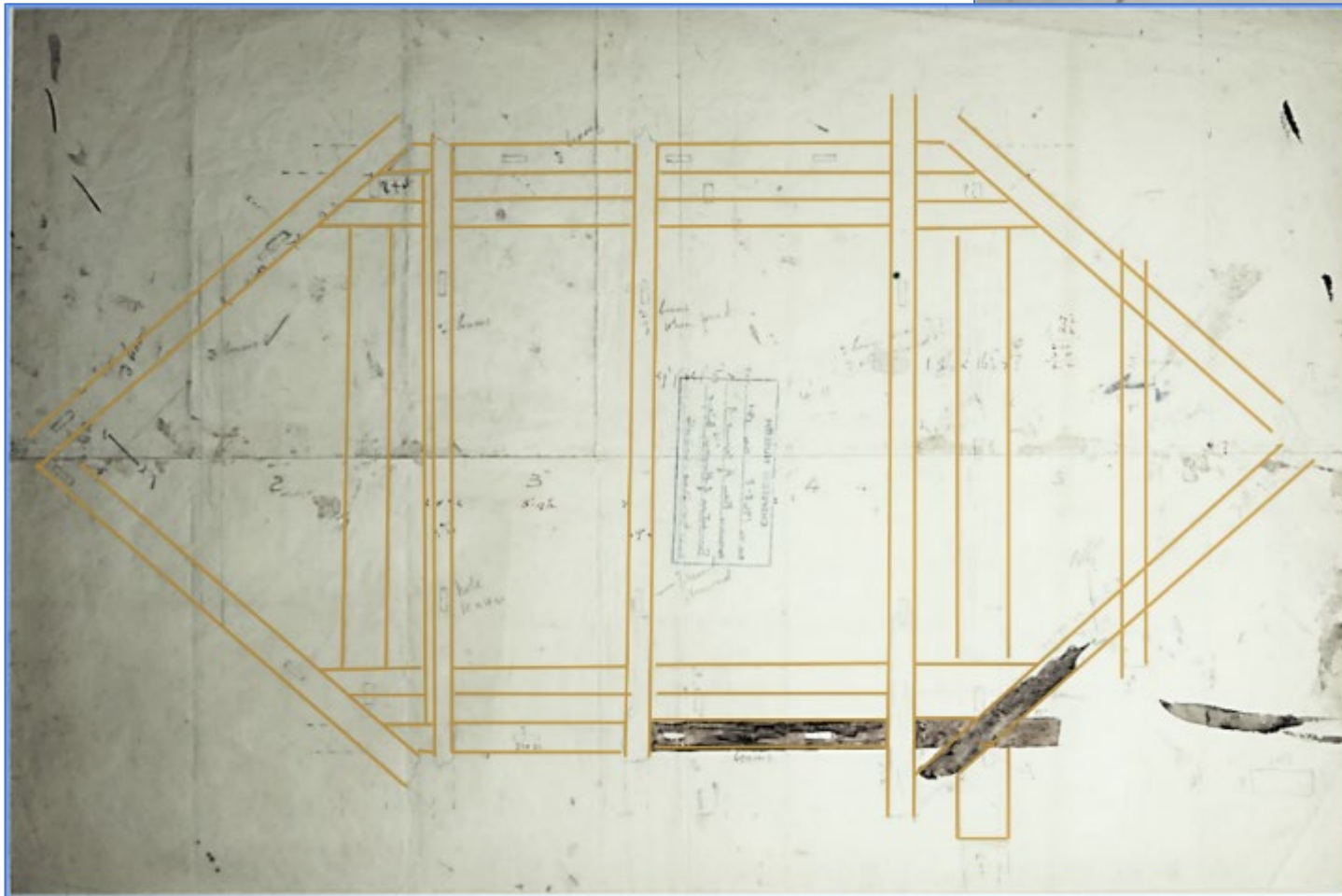
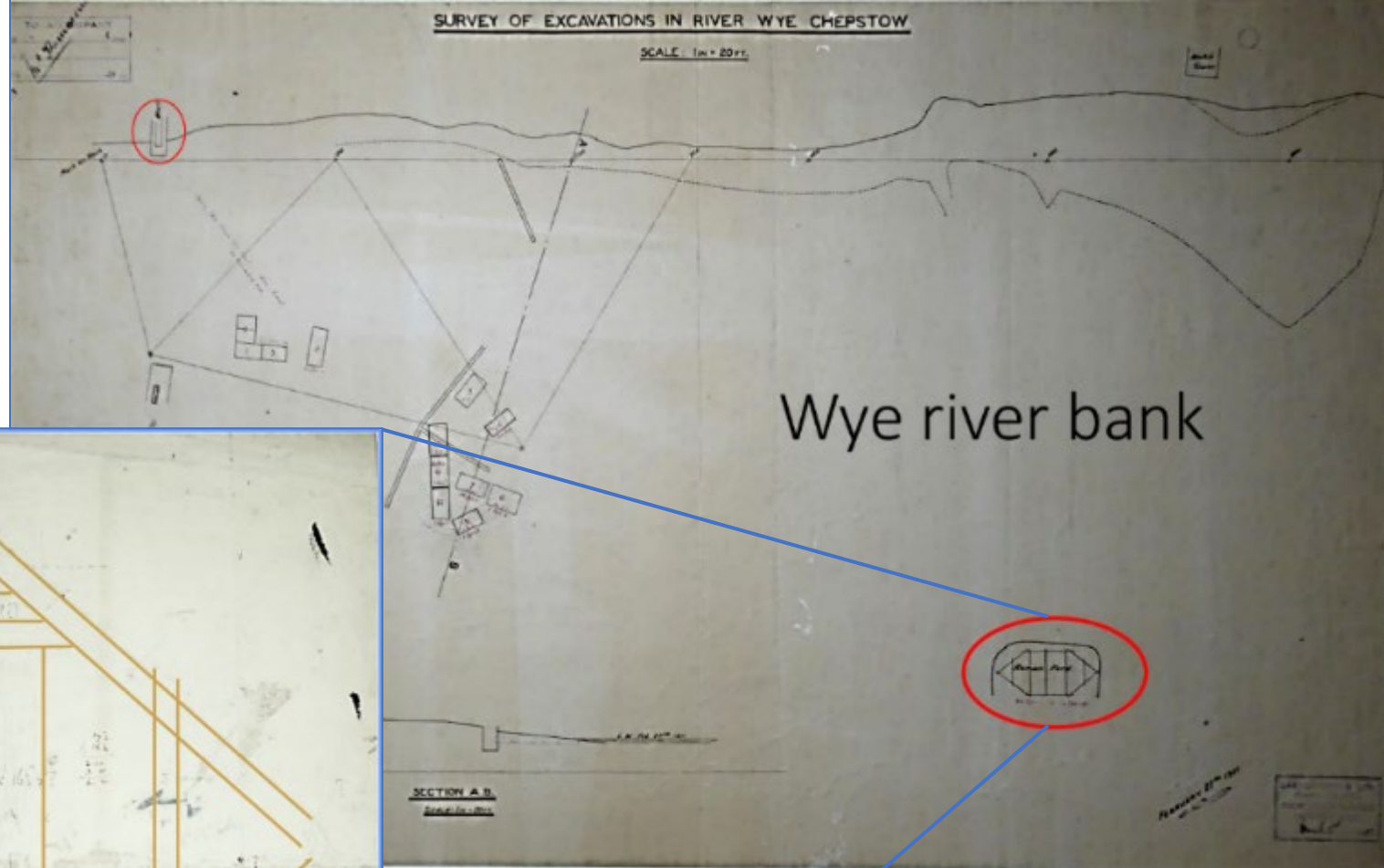


1911



Chepstow Museum

1911



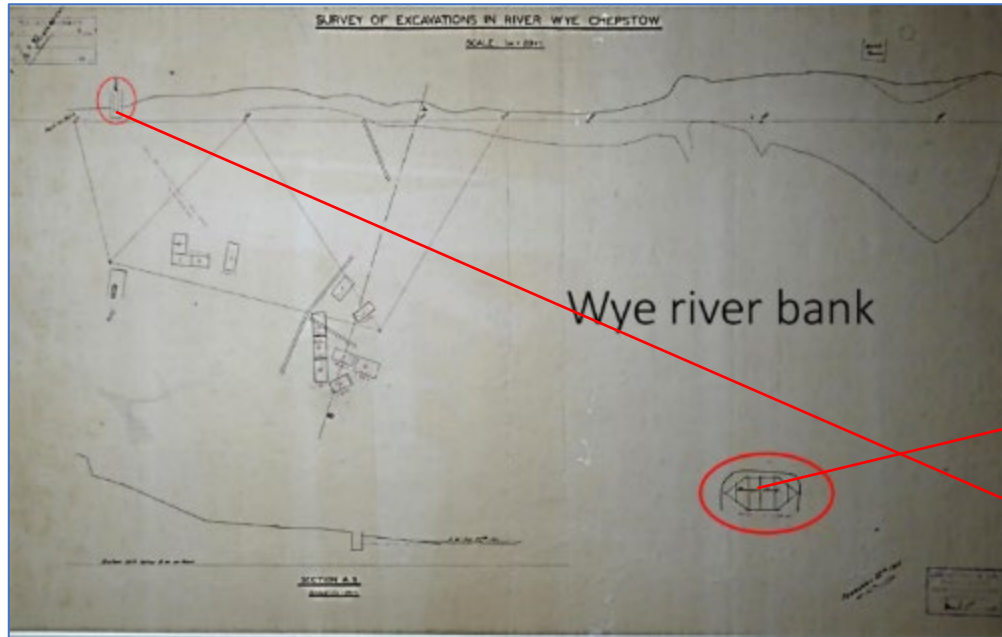
# Extreme Archaeology 2003



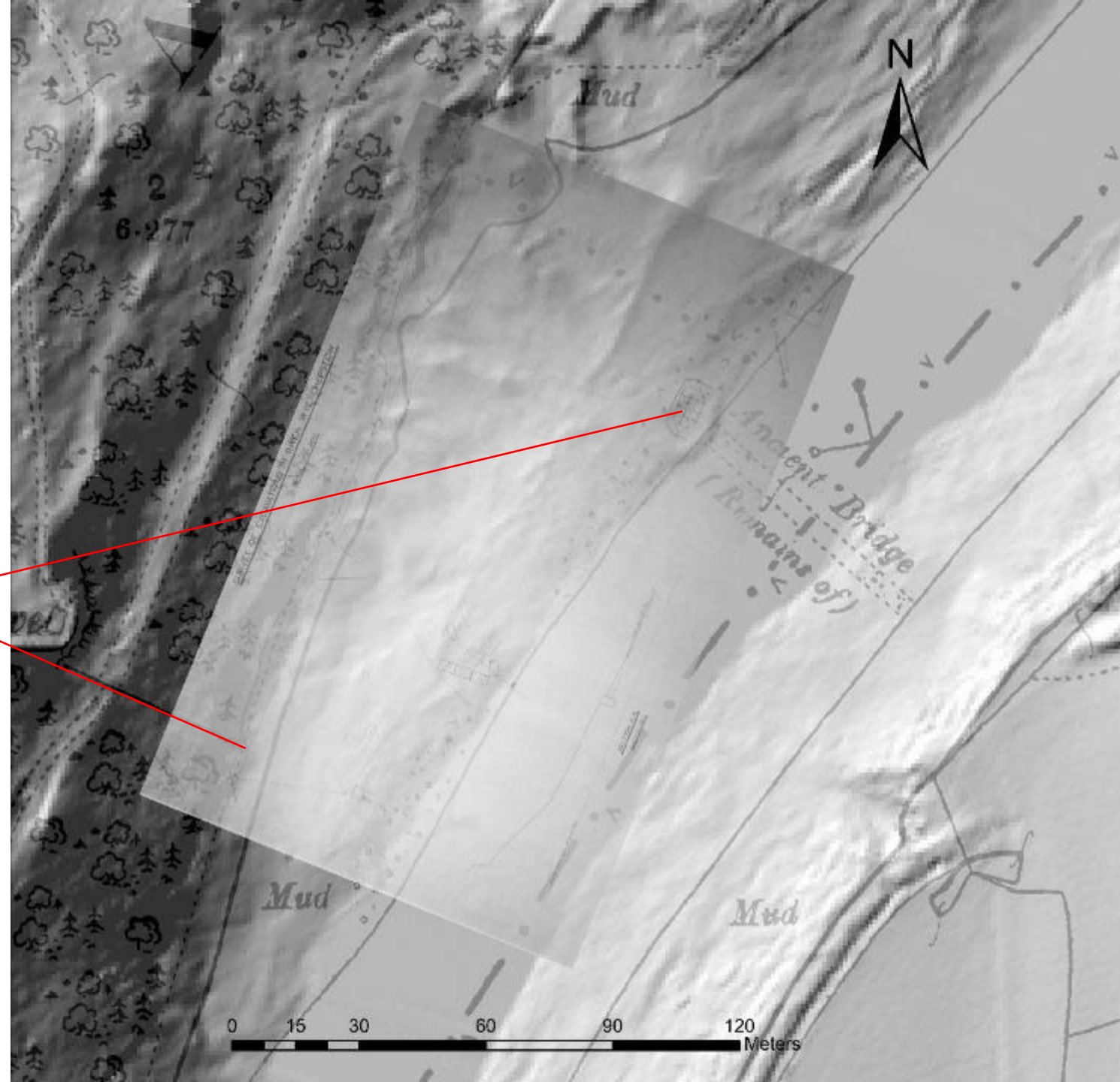
C14 dates on Timber Sample:  
50BC to 126 AD (at 95% probability)  
35BC to 107 AD (at 68% probability)  
**It's 1<sup>st</sup> Century AD**



# Locating the Structure



Extracting likely map coordinates from GIS

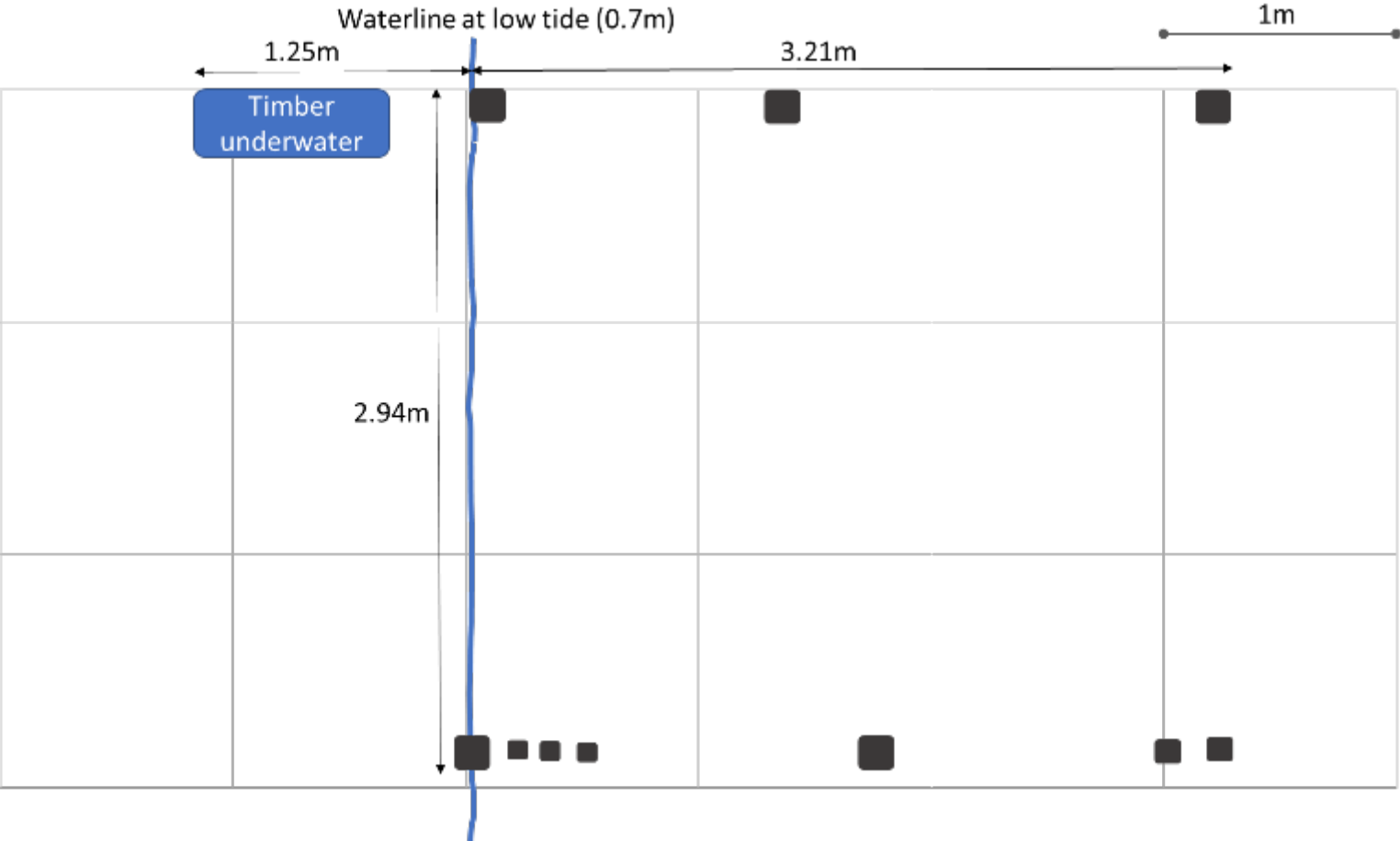


# May 2023

## The English Side ...



# English Side – Dimensions



# The Welsh Side ..



August 2023



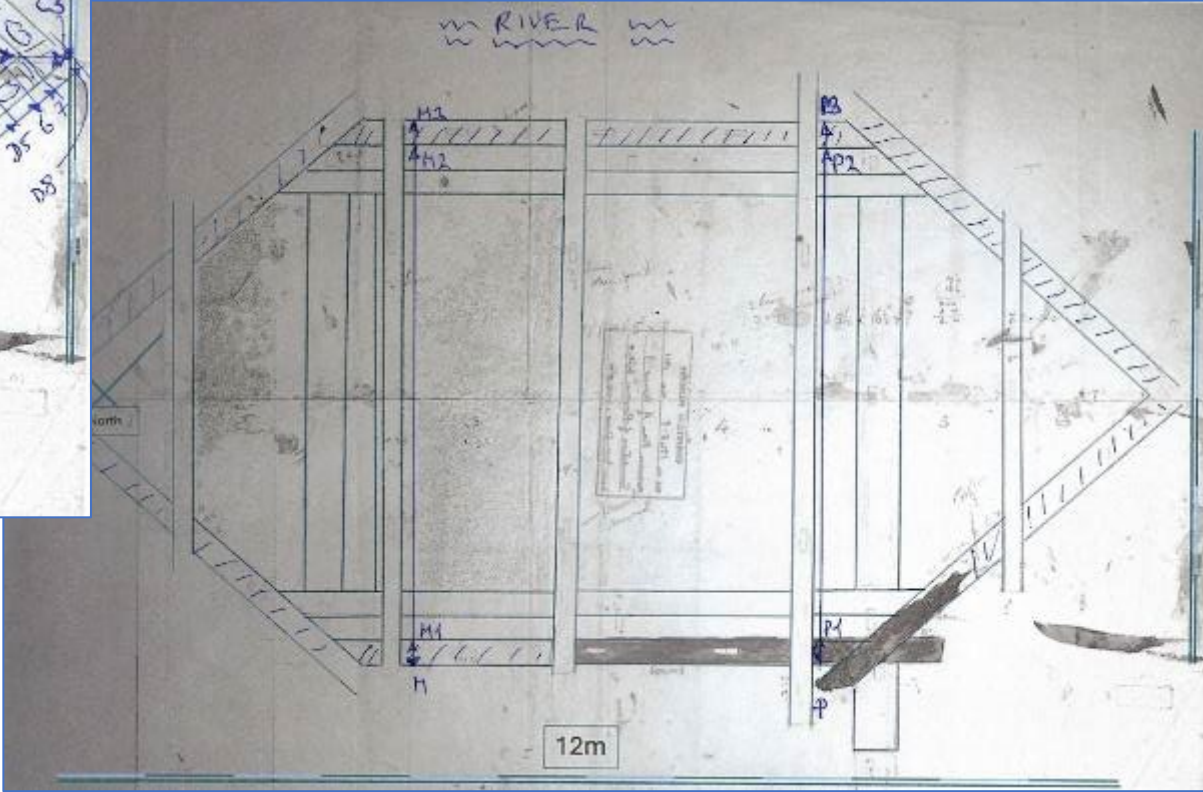
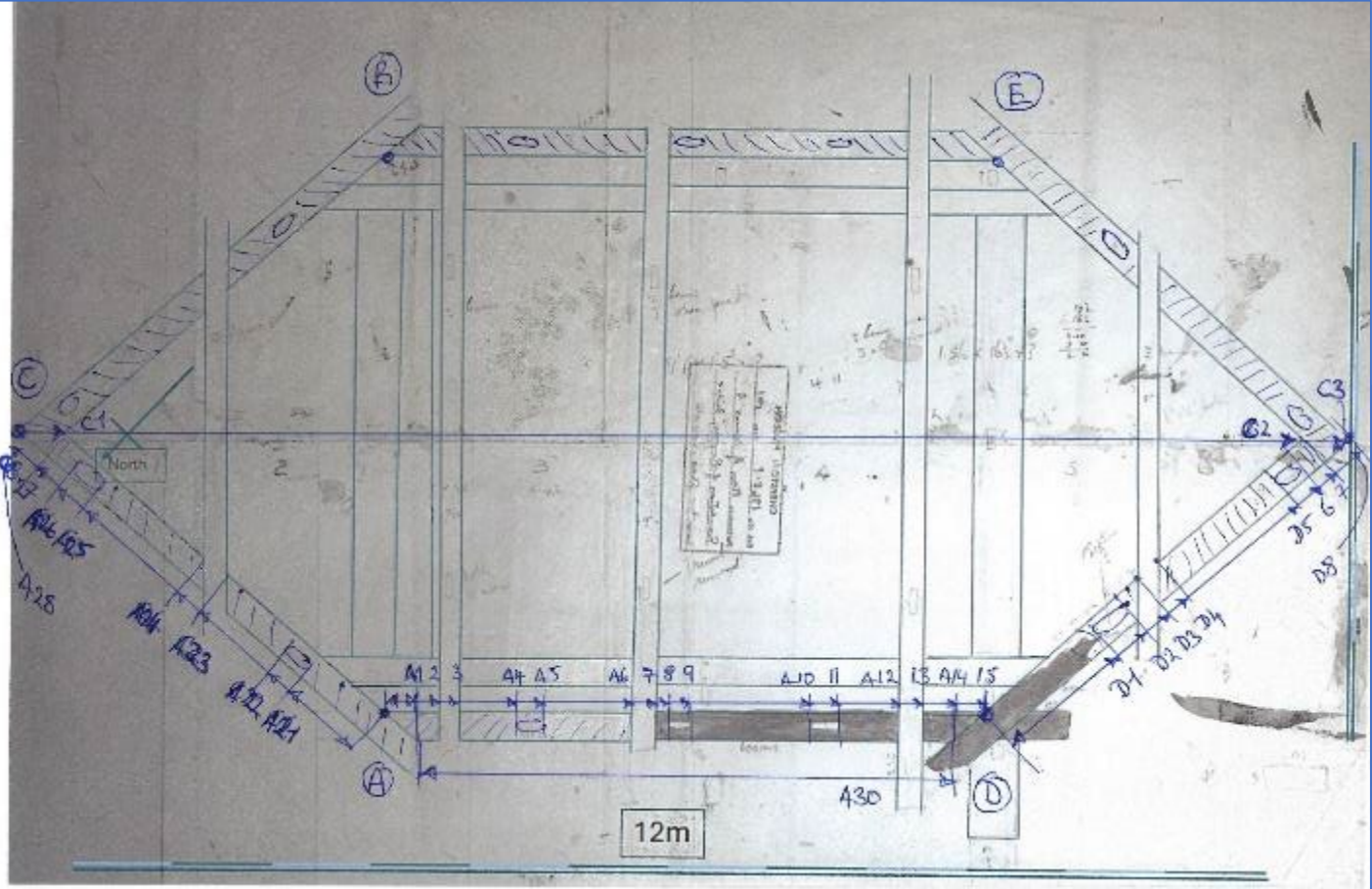




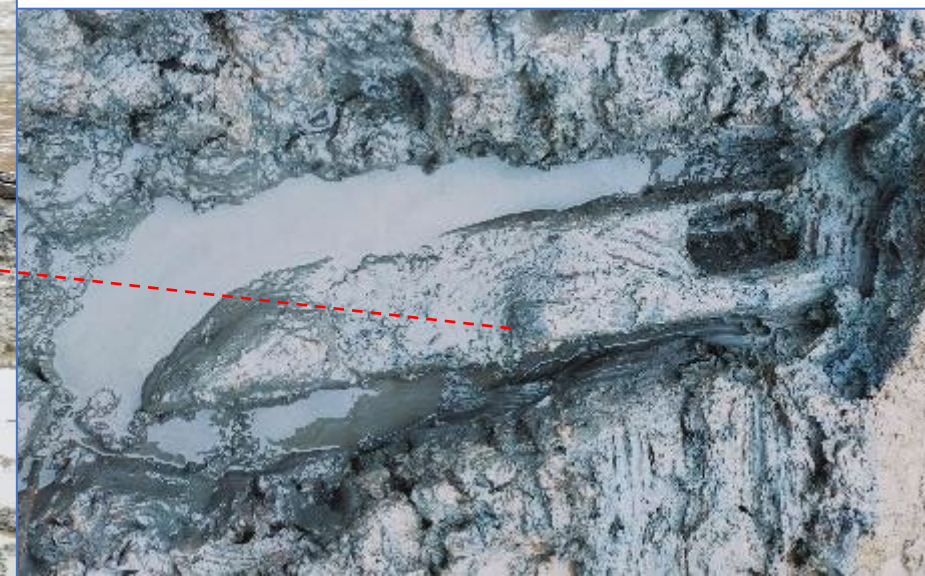




# July 2024 – detailed measurements



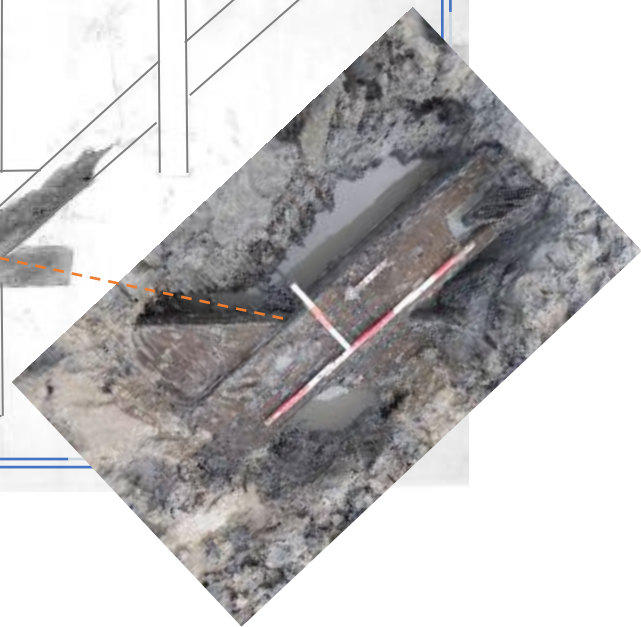
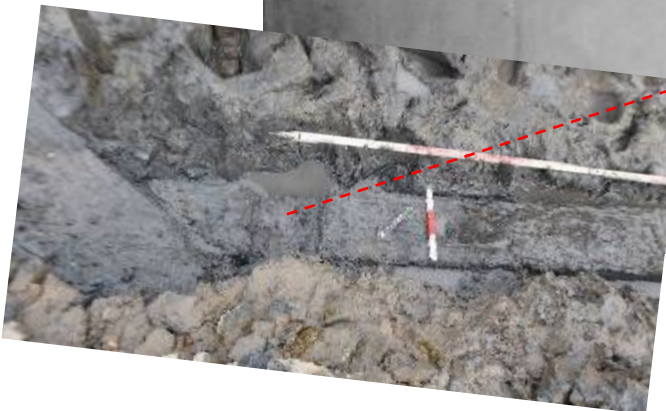
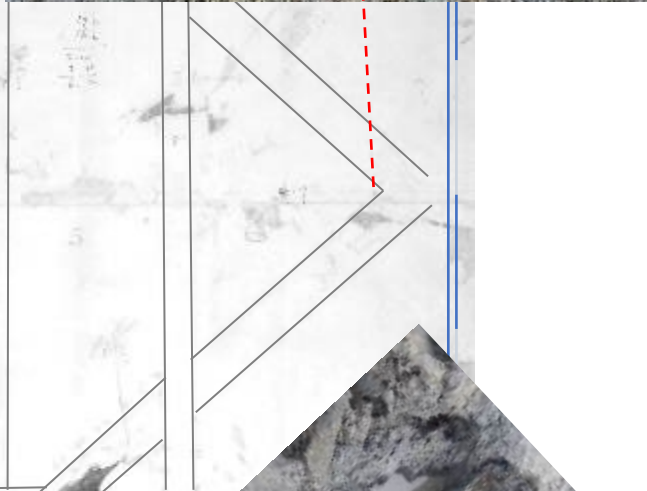
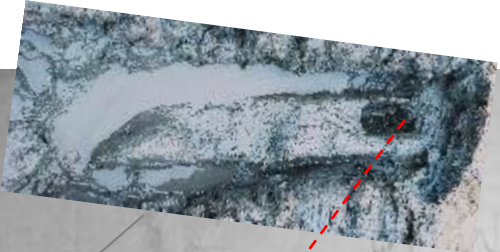
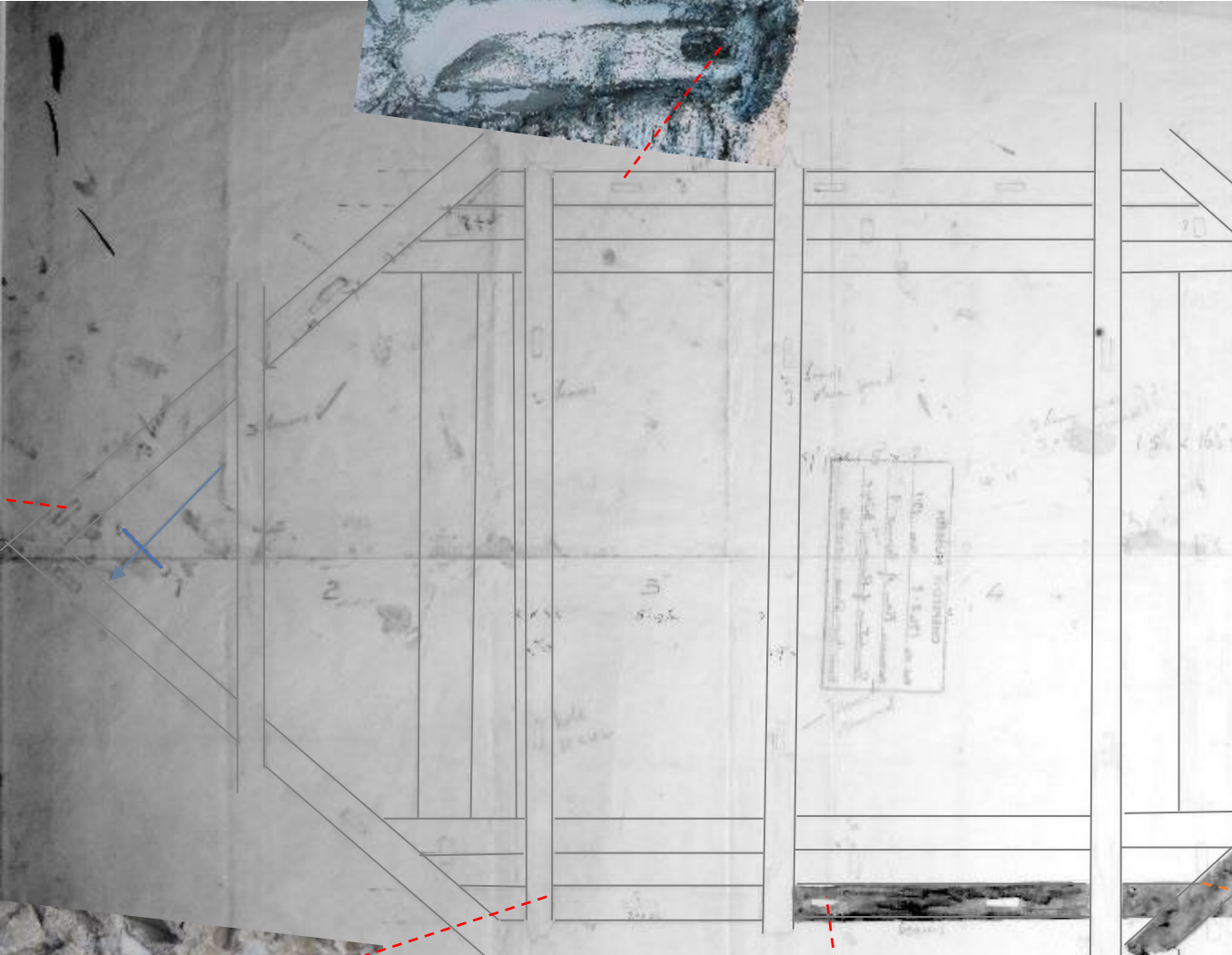
Inner and outer sides

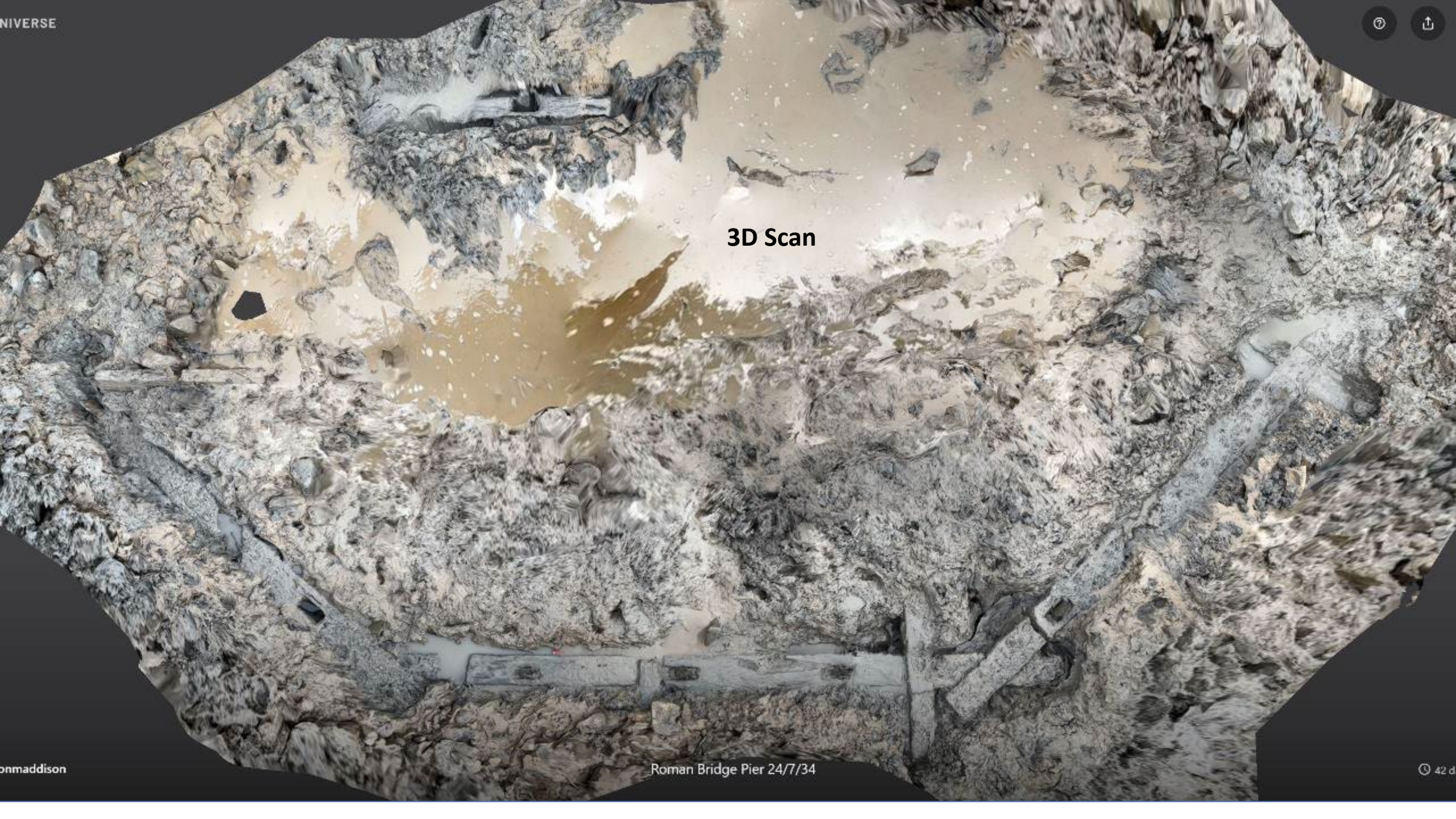




Upstream and downstream ends



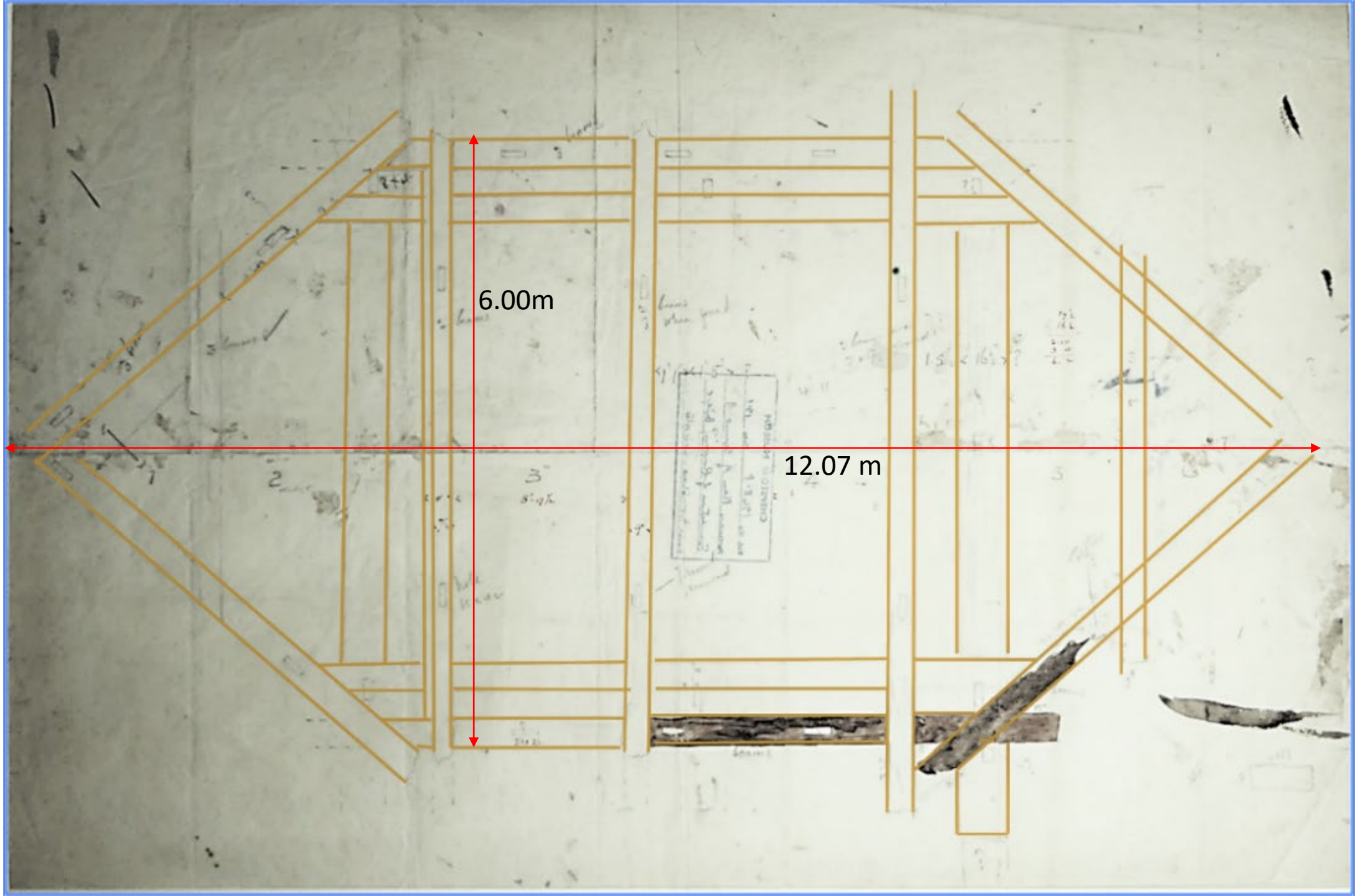




3D Scan

Length 12 m  
Width 6m

Approx. 40 x  
20 Roman ft.



Drone Image 21.8.24



Mark Horton

Something in the river ...

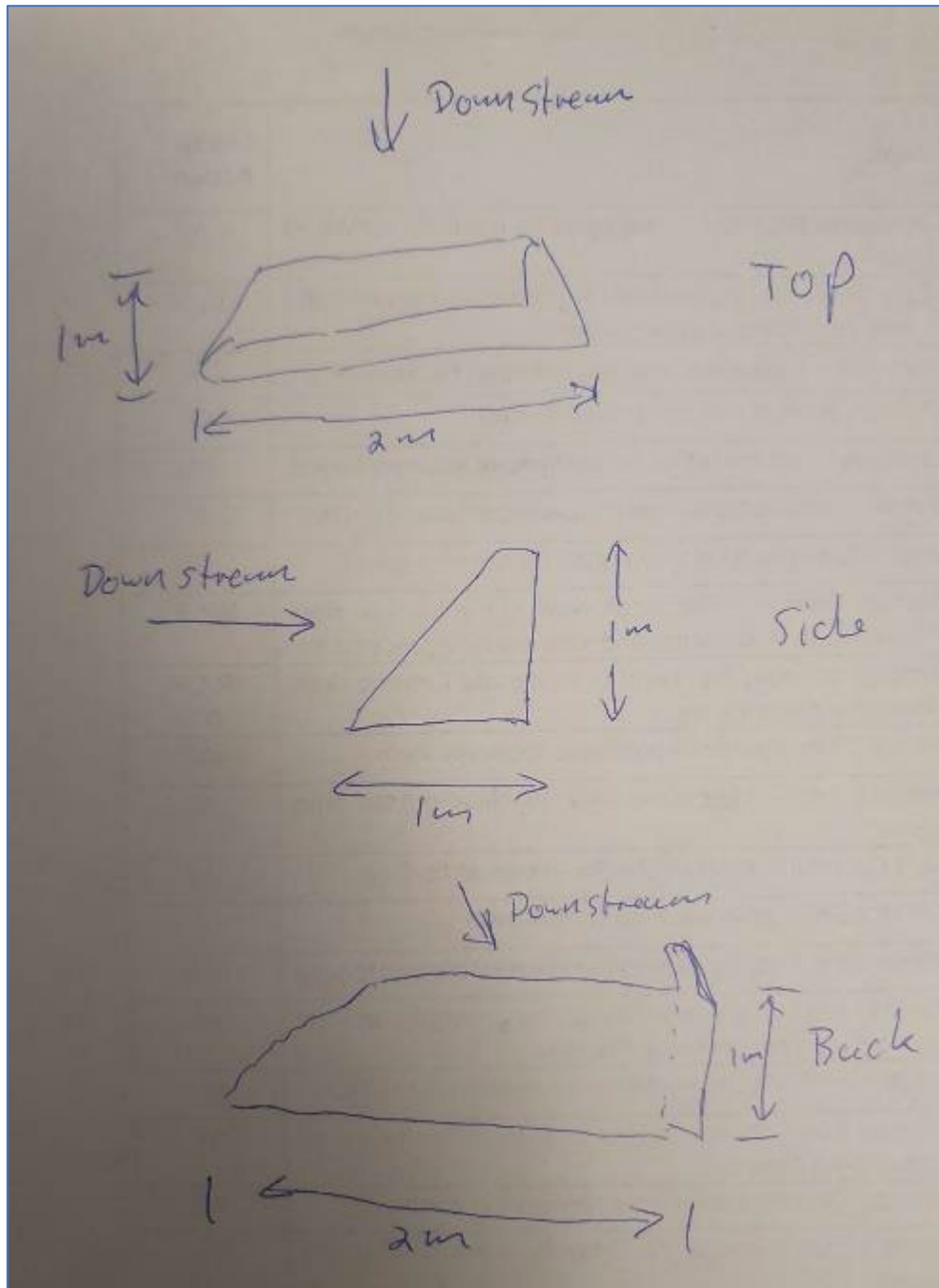




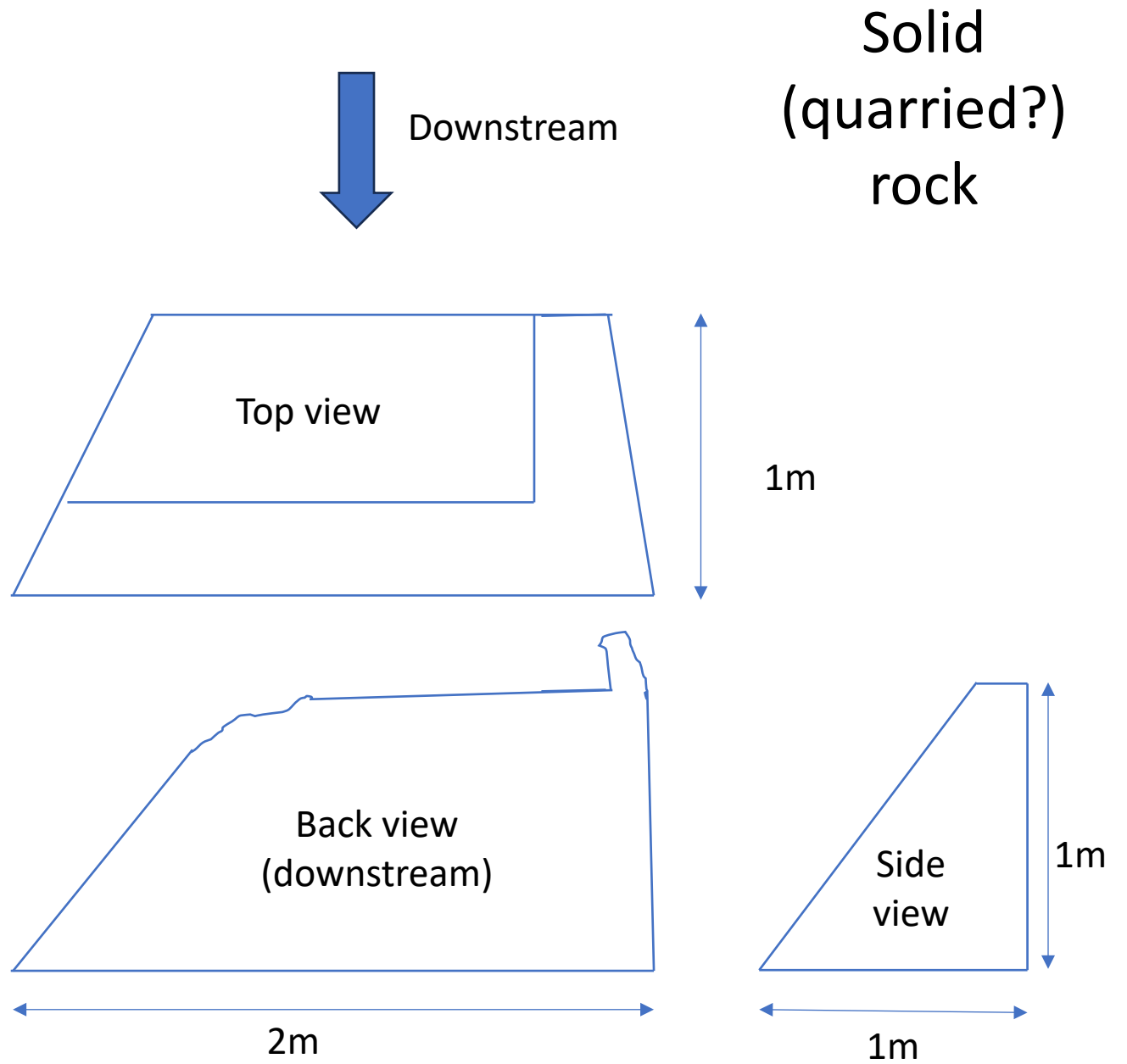
SARA: Andy  
Torbet & Mark  
Powell dive on  
the river  
feature ..  
6.9.24



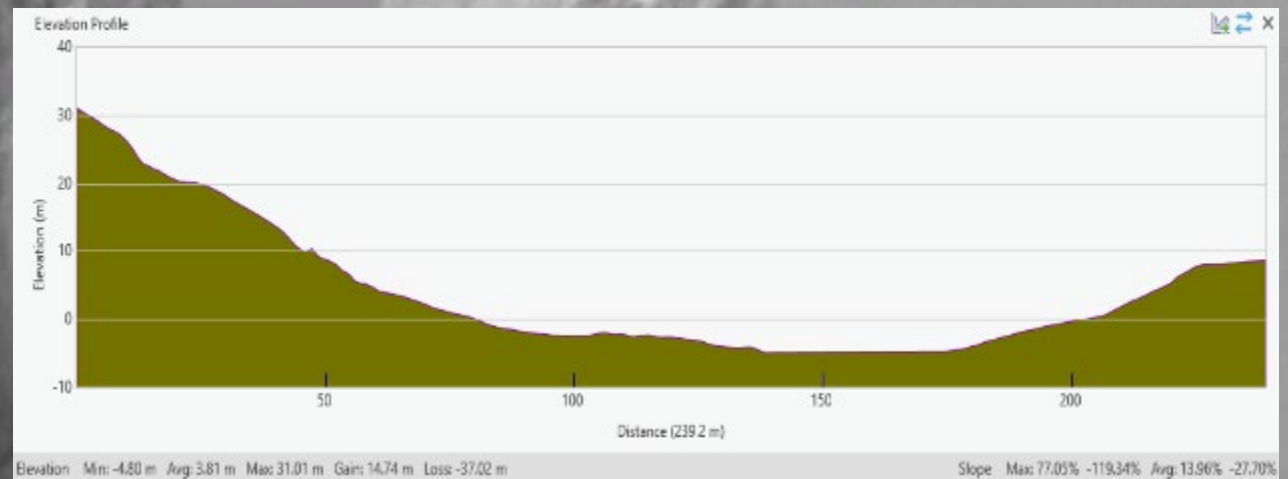
Mark Horton



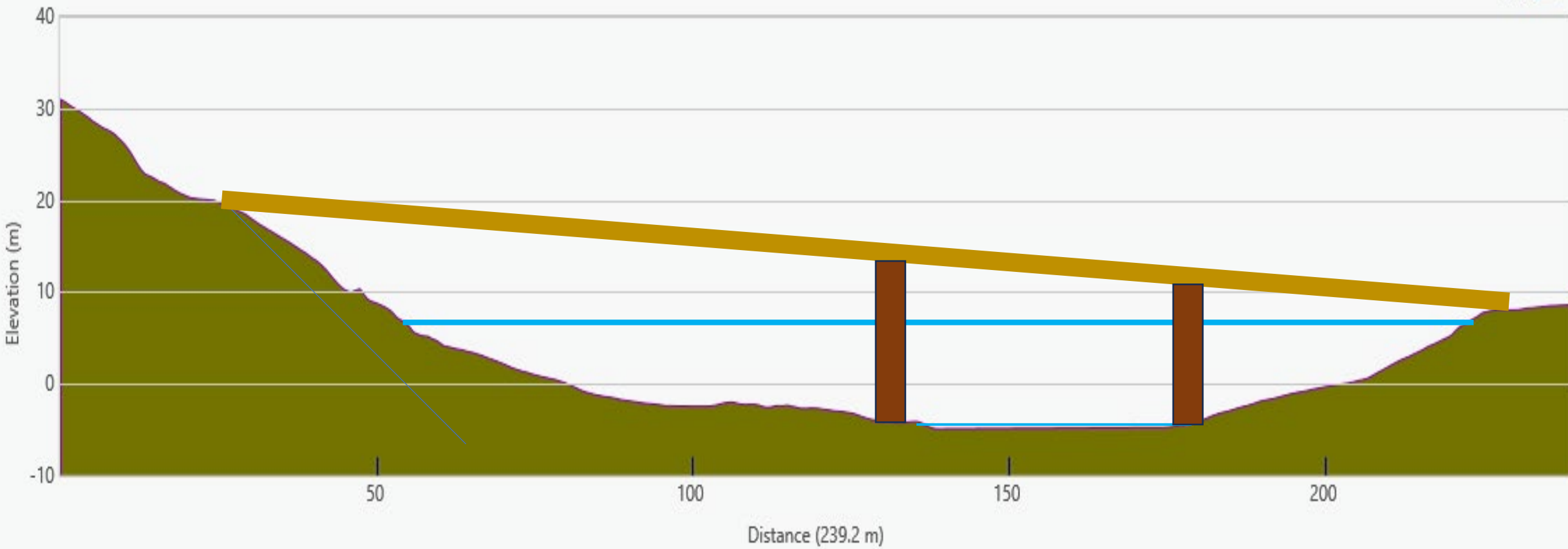
Mark Powell, SARA



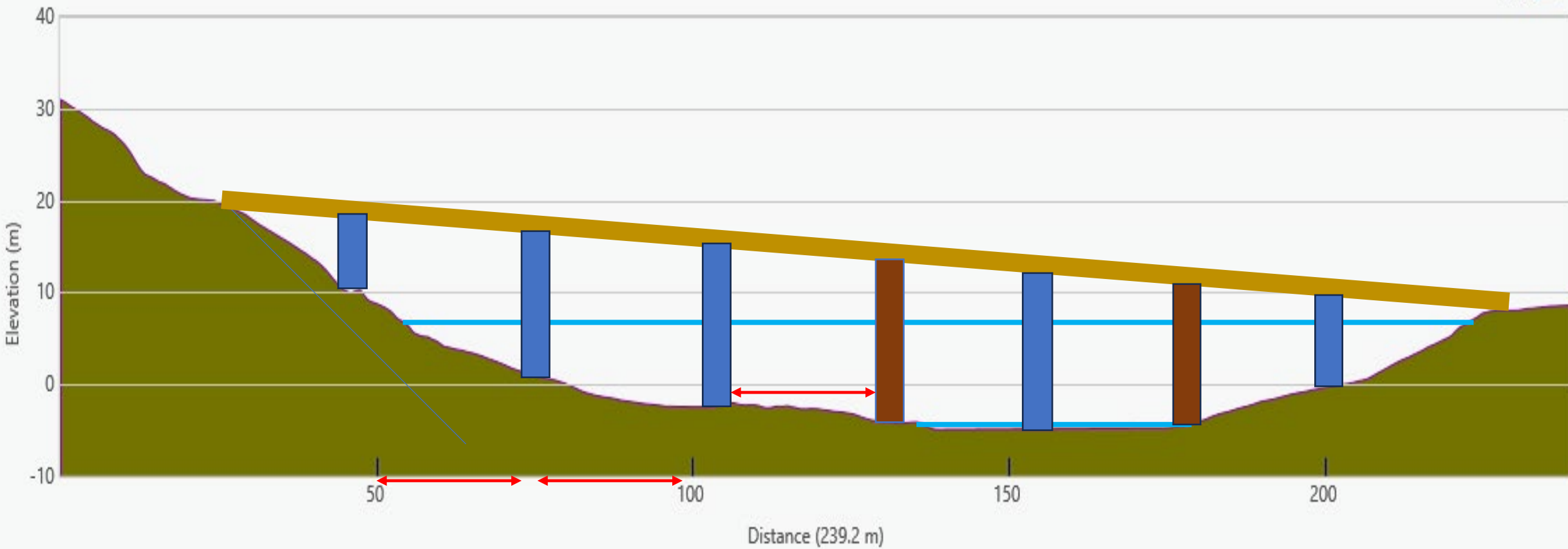
# Putting it all together ...



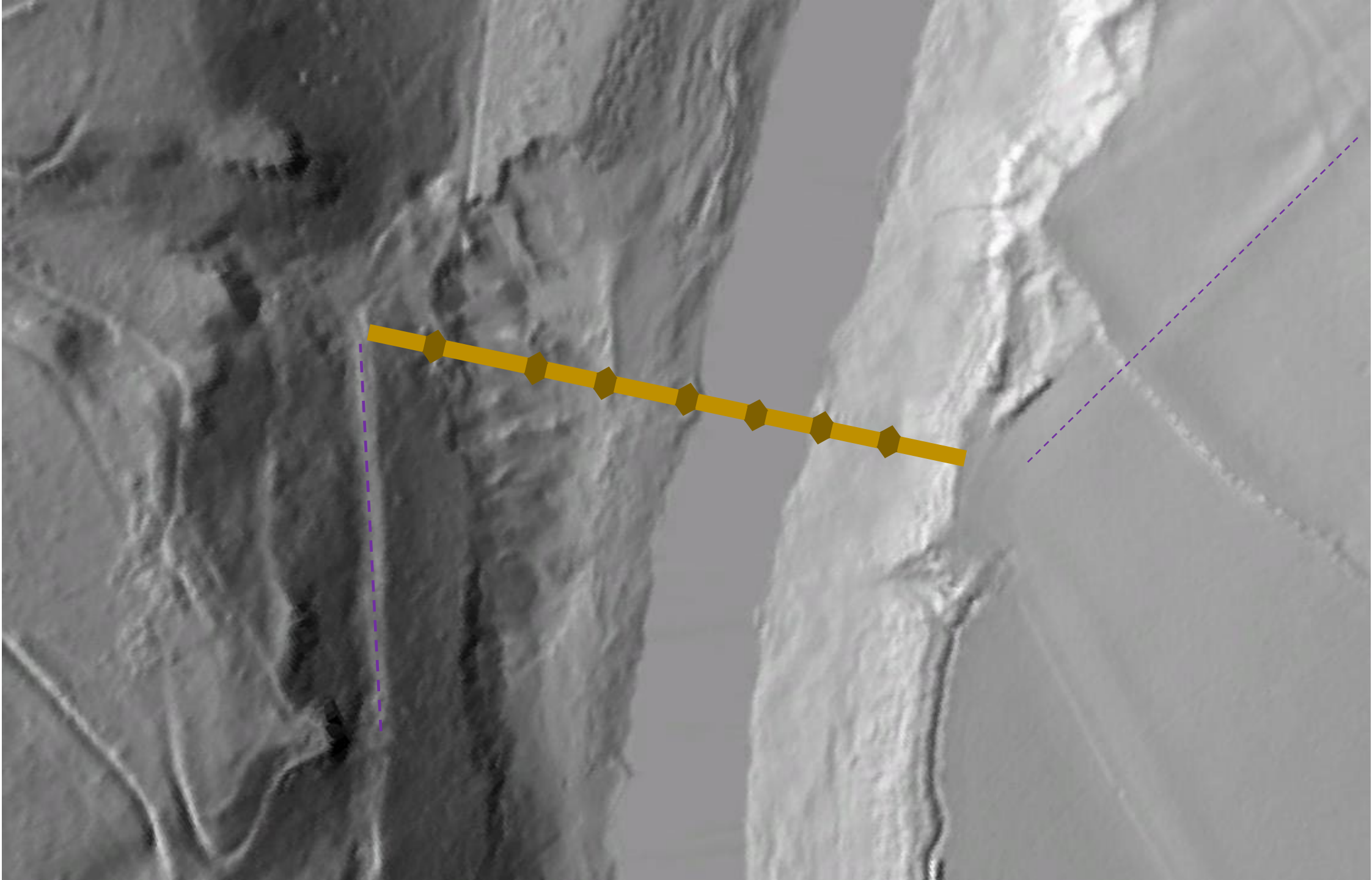
Elevation Profile



Elevation Profile



Length ca. 180m; height change ca. 10m; assume spans ca. 25m



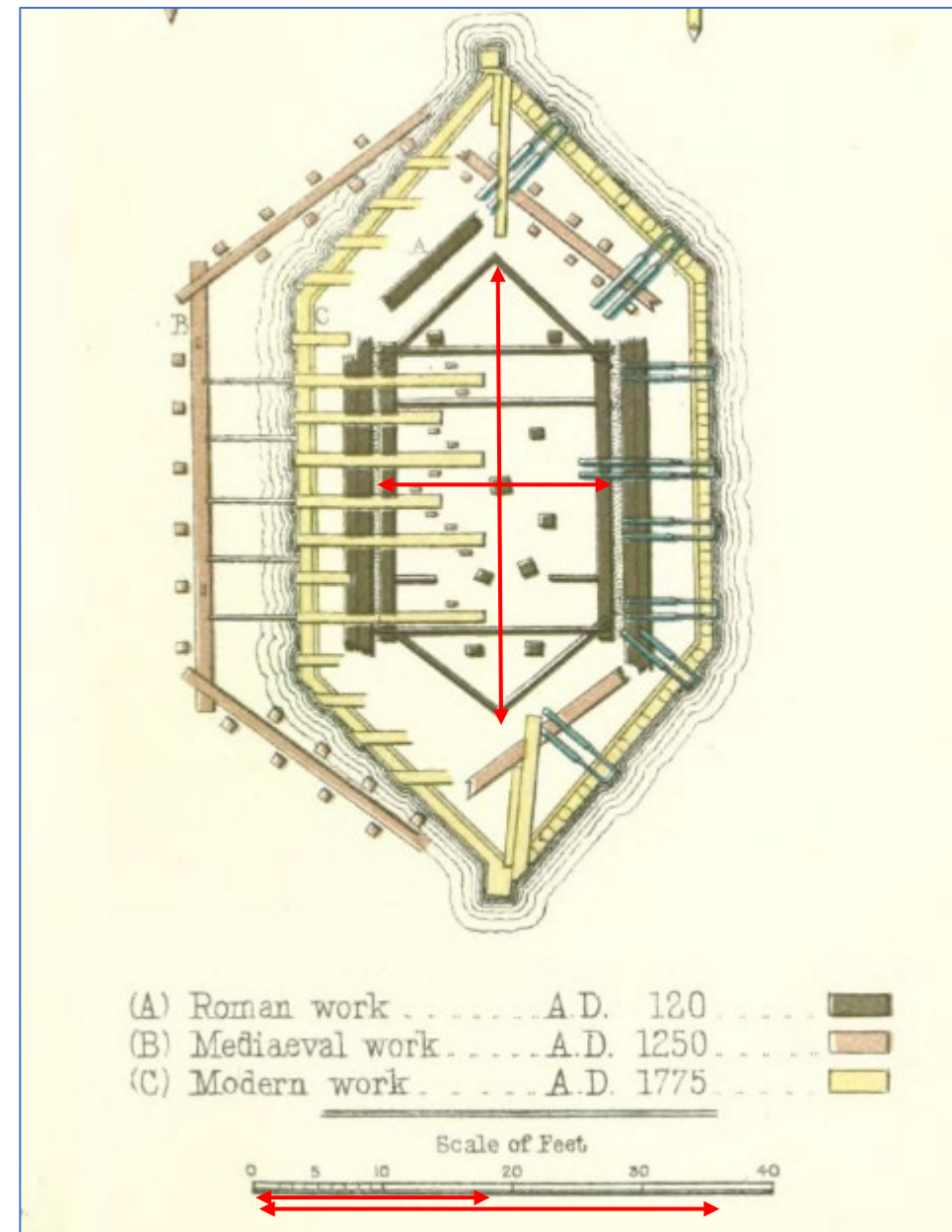


Linda Waters,  
Chepstow Museum

... questions, questions

- When and why was it constructed?
- What did it look like?
- What is the 'rock in the river'?
- Are there other traces that we could find?
- What routes did it connect to?

Tyne Bridge  
Newcastle, Bruce  
1872





# And very many thanks ...

- Richard Newhouse and SARA – Mark, Mary, Drew and Andy Torbin - without whom this work would not have been possible
- Our fantastic expedition teams: Lynne, Dick, Katie, Rebecca, Barbara, Simon Tee
- Mark Horton for the brilliant Drone photography.
- Nigel Nayling who took the timber samples, ran dendro analysis and samples for C14 dating
- Annie Rainsbury at Chepstow Museum for all her support, information and images
- The MAA for their generous grant to support two C14 dates